

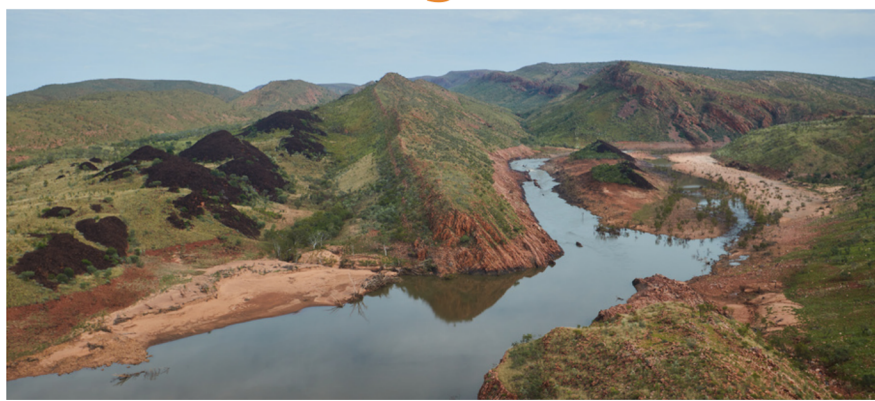
February 2023 - Pictures from the air

As we focus on the recovery for all the impacted areas, the Flood News Flash would like to reflect on the extent of the damage caused by the flooding across our network. We have all seen the Fitzroy Bridge but some people didn't realise how far the water travelled during the event. Here are some areas that were affected.

Camballin



Diamond Gorge



Windjana Gorge



FERRY SERVICES

The passenger ferry has now taken more than 10,000 people over the Fitzroy River and is still running daily. The ferry will continue for as long as the river is high enough for boats to travel on. To view the ferry and bus times, go to mainroads.wa.gov.au.

With the crossing now open, the 4WD ferry service across the river is no longer running.

FITZROY RIVER BRIDGE

The Roads people will start work to build the new Fitzroy River bridge in the next few weeks – it will be six times stronger, with two lanes rather than one – and almost 100m longer than the old bridge.

The demolition of the old bridge is scheduled to start in late May.

LOW-LEVEL CROSSING OPEN TO ALL VEHICLES UNDER 16 TONNES

The Fitzroy River low-level crossing is open to all light vehicles under 16 tonnes – this includes 4WDs (including those towing caravans and trailers) and 4WD tourist buses. Drivers are asked to take extreme caution and expect some delays.

Advice on access for trucks will be provided by the Roads people next week. For up-to-date information on roads, visit the Main Roads WA Travel Map on mainroads.wa.gov.au.

KIMBERLEY-BASED ABORIGINAL BUSINESS & JOB SEEKERS

There are a range of support services available for Kimberley-based Aboriginal businesses and job seekers impacted by the floods.

The services are available to any Aboriginal business, organisation, community or person in the region.

Head to agric.wa.gov.au/kimberley-flood-recovery to learn more.

PREMIER'S FLOOD PAYMENT

The team in the Flood Hub can help you apply for the Premier's \$1000 Flood Payment. Go to your nearest Flood Hub and they can check if you're eligible and help you with your application. People who were 18 years old (on or before 10 Jan) and had their house damaged by the flood are eligible to apply.

You can also apply online at dfes.smartygrants.com.au/PremiersFloodPayment or by calling the Disaster Response Hotline on 1800 032 965 (9am –4pm).

Road Status - Shire managed roads

Did you know you could check the latest status of the roads in your area by checking the Shire of Derby/West Kimberley website www.sdwk.wa.gov.au? We have many roads in our area that were damaged by the flood and we are working hard to open these roads as quickly as possible.

There are 3 conditions that your road could be under on the website:

- ROAD CLOSED
- ROAD OPEN
- ROADS AND/OR RIVER CROSSINGS OPEN TO 4WD UNDER 4 TONNE WITH CAUTION (NO CARAVANS/CAMPER TRAILERS)

This information gets updated when a condition of any of our roads changes. You can also join our mailing list by signing up through our website. If you require more information you can email sdwk@sdwk.wa.gov.au and we will provide feedback on your questions about any road we manage.



ANZAC Day

On the 25th of April 2023 the townships of Derby and Fitzroy Crossing held ANZAC ceremonies. Australians and New Zealanders recognise the 25th of April as a day to remember and show their appreciation for those who fought and died in the war.

Commemorative services and marches are held at dawn, the time of the original landing.

Anzac Day promotes a sense of unity, perhaps more effectively than any other day on the national calendar. People whose politics, beliefs and aspirations that are widely different can come together to honour those that have served our nations.





Contact Information

Department of Communities Disaster Response Hotline

1800 032 965

Mental Health Help - Fitzroy Crossing

9166 1700

Mental Health Help - Derby

9193 3605

After Hours - Mental Health Support

1800 552 002

Aboriginal and Torres Strait Islander Crisis Support (24/7)

13YARN (13 92 76)

Next Community Meeting

Fitzroy Crossing Recreation Centre - Tuesday 2nd May 2pm

Updates from Main Roads, Dept of Communities and many more

Flood Hubs

Fitzroy Crossing Visitor Centre

4 Flynn Drive

8am-4pm

Monday - Thursday

Broome Boulevard Shopping Centre

106 Frederick Street

10am-2pm

Monday - Friday

Derby Housing Office

16-22 Loch Street

10am-2pm

Monday - Friday

Do you have a story to share or updates from your area? We want to hear from you! Contact us by phone (08) 9191 0999 or email media@sdwk.wa.gov.au