

15 February 2024

Flood News Flash



Artwork by Natalie Davey

Junior Footy is back in Fitzroy Crossing!

FITZROY CROSSING PRESENTS

JUNIOR FOOTBALL

FRIDAY NIGHTS @ 5PM - 7PM **DINNER & DROP OFFS PROVIDED**

FITZROY CROSSING TOWN OVAL

WA POLICE
Shire of Derby / West Kimberley
CKFL
MARRA WORRA WORRA ABORIGINAL CORPORATION

Attention all young athletes of Fitzroy Crossing! The Junior Footy season is about to kick off. Gear up for action-packed Friday nights starting from the 16th of February, from 5 PM till 7 PM.

- 📅 Every Friday Night
- 🕒 5 PM till 7 PM
- 📍 FX Town Oval
- 🍴 Dinner and Drop-off Provided
- 👉 Open to all youth of FX

Bring your energy, bring your passion, and let's make Friday nights deadly with local footy.

And there's more! Shire youth activities will continue to run until 10PM on Friday Nights. So, once footy finishes, the youth can enjoy even more fun.

We would like to thank WA Police, Central Kimberley Football League and Marra Worra Worra for helping make this happen.

FX YOUTH PRECINCT

COME AND HEAR WHAT YOUR COMMUNITY HAD TO SAY!

We will be back in FX to let you know what your community said they wanted in the FX Youth Precinct! There will also be concept designs for you to look at and give feedback on. Please come along to one of the forums below.

TUESDAY 20 FEBRUARY DROP IN AT KARRAYILI 1.30PM - 3.30PM	WEDNESDAY 21 FEBRUARY VISITORS CENTRE (GRASSED AREA) 10.00AM	WEDNESDAY 21 FEBRUARY IGA 12.30PM
THURSDAY 22 FEBRUARY DROP IN AT KARRAYILI 1.30PM - 3.30PM	THURSDAY 22 FEBRUARY SDWK YOUTH PROGRAM 5.30PM	For more information contact Peta Clavis from Comm Pro Consultants - 0437 739 904 commpro.22@gmail.com

FOOD PROVIDED

Shire of Derby / West Kimberley

Fitzroy Crossing Youth Precinct Update

We have collated all your information you gave us about what you would like in the Fitzroy Crossing Youth Precinct and we want to show you what we have come up with!

Head to one of the forums listed in the poster to see concept designs for the space and give your feedback.

Food is provided and we would love to see you there!

On Country Cuppa Circle Program

It was an honour for the Shire of Derby/West Kimberley Fitzroy Crossing team to venture out to Muludja community yesterday for a Cuppa Circle at the school, followed by a walk through country with Edna Cherel to gather bush medicine for our Bush Dying workshop.

Edna guided us and a couple of the team from Nindilingarri Cultural Health Services to various spots outside the community to collect Bloodwood sap for dyeing materials in our workshop.



The following day, we had our Cuppa Circle under the shade of the trees outside the Visitors Centre where we enjoyed morning tea, the Bush Dyeing workshop, and plenty of tea and coffee.

We were grateful for the generous donations of beautiful clothing from FISH, and it was heart-warming to see so many participate for most of the morning. We invite everyone to join our next Cuppa Circle on Wednesday the 21st of February out front of the Fitzroy Crossing Visit centre from 10am-12pm. All Welcome!



Fitzroy Crossing Rockwall - helping connect our communities

The rock walls built along the banks of the Fitzroy River are an important measure to prevent erosion to the riverbanks and protect the new bridge from damage. Severe erosion of the eastern riverbank contributed to the collapse of the bridge on the eastern side during last year's floods.

To keep that from happening again, more than 80,000 tonnes of rock was placed over three months in the project that was finished six months ahead of schedule.

Engineers and designers took into consideration the shape and flow of the river to determine the length and size of the rock walls.



The massive rocks utilised in construction were sourced from three quarries across the Kimberley region, along with the reuse of rocks that previously shielded the old bridge.

Striking statistics from the Bureau of Meteorology (BOM) recorded an unprecedented 60,000 cubic metres of water flowing per second during last year's historic flood. To put the event in perspective, that kind of daily water movement down the river is equivalent to the amount of water used in Perth over a staggering 20-year period.

The building of the new bridge was undertaken by Main Roads WA, Georgiou Group Pty Ltd, BMD Constructions Pty Ltd, designer BG&E all as a part of the Fitzroy Bridge Alliance. The new bridge's reconstruction was jointly funded by the Australian and Western Australian Governments through the Disaster Recovery Funding Arrangements (DRFA).

DID YOU KNOW?

The new bridge is six times stronger than the old bridge and contains twice the number of steel and concrete piles, driven twice as deep into the riverbed.

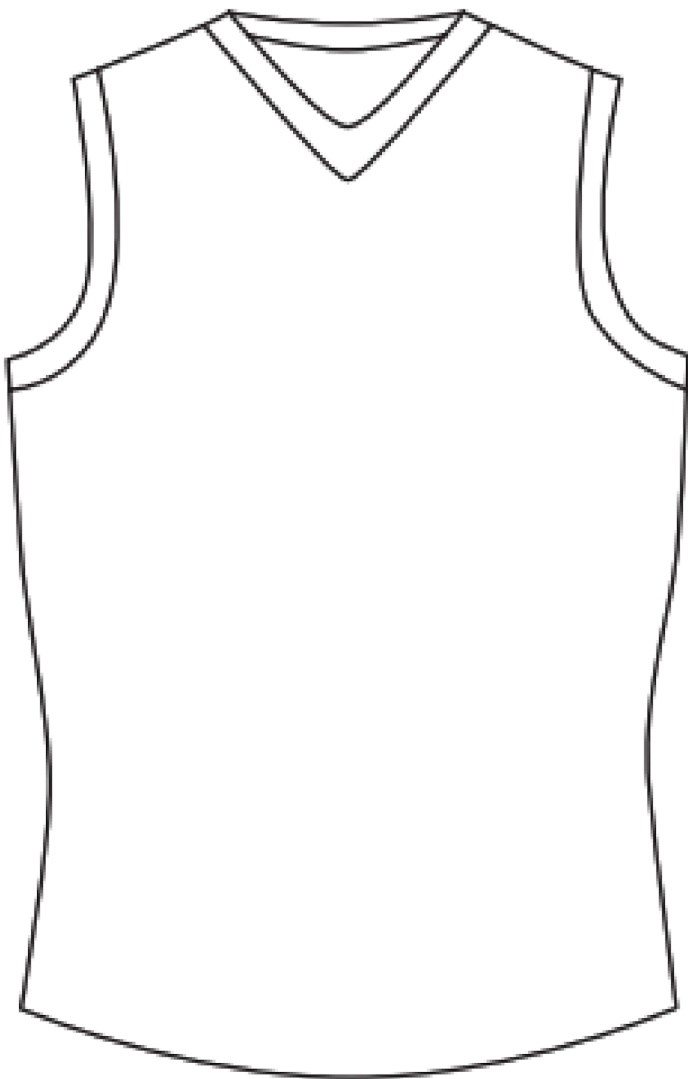
LMDRF Funding Applications still open - Vehicles and Fixtures and Contents

A reminder that applications are open for vehicles as well as fixtures and contents that were damaged in the Kimberley Floods. People can apply for assistance of up to \$15,000 for vehicle repairs and up to \$40,000 if their vehicle has been written off. People can also apply for assistance of up to \$15,000 for fixtures and contents.

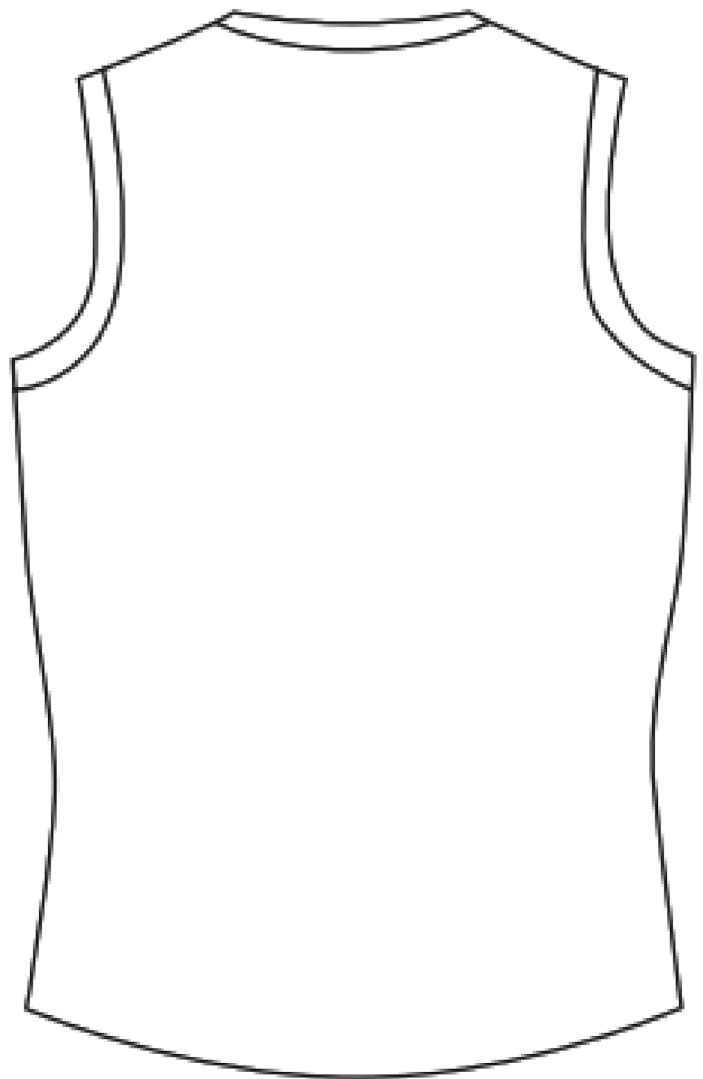
Applications for both these rounds of funding can now be made in person to the Shire of Derby/West Kimberley at the Flood Hub in the Fitzroy Crossing Visitor Centre. Contact the Flood Hub at 9191 0904 or in person on Corner of Forest Rd and 4 Flynn Drive from Tuesday to Thursday 8am to 12pm.

AFL Jersey

Create your own AFL jersey with your own colours, number and name!



FRONT



BACK