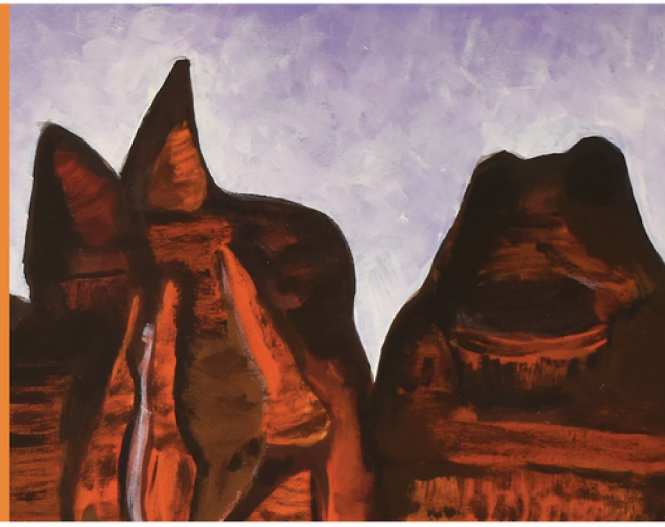


22 February 2024

# Flood News Flash



Artwork by Natalie Davey



The Hub is a combined space that hosts organisations involved in Flood Recovery and aims to create an environment for those that are flood impacted to only have to tell their story once. The goal of the Flood Hub is for community members to feel safe and be able to meet their needs.

We want to assure you we are still here! The Flood Hub staff held a planning day to identify the key priorities for 2024 and to align with Kimberley Floods State Recovery and Resilience Plan 23/24 and its guiding principles.

The day was an opportunity for delivery agencies to come together to share valuable insights, feedback, knowledge and experiences to foster a strong, collaborative approach to flood recovery across all communities which were impacted.

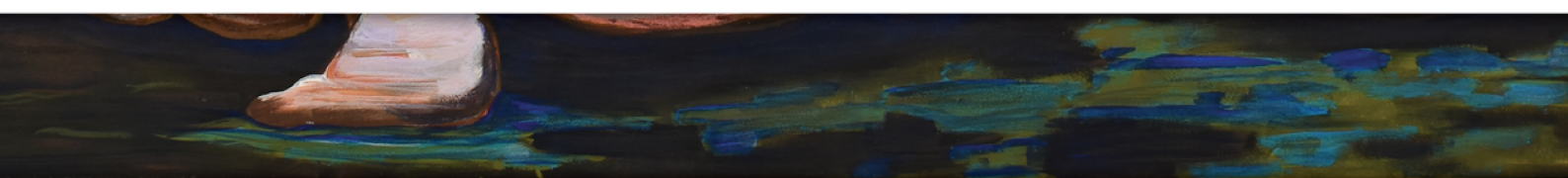
We want to know how best we can help you and hear your feedback about our service delivery for flood recovery. Do you want more events, outreach, grants open days?

Please come in and see us at the Fitzroy Crossing Flood Hub inside the Visitor Centre and we can discuss your needs and provide any help and assistance that you require. We are open Tuesday - Thursday 8am - 12pm or give us a call on 9191 0904.

## Looking back and planning for 2024 - Flood Hub agencies come together

The Fitzroy Valley and surrounds have faced many challenges in the past 12 months, yet the community stands resilient and united.

The Fitzroy Crossing Flood Hub is a one-stop shop for the community to access flood recovery support services.





# Wet Season Weather - Prepare!



During wet season weather, be prepared and stay up to date:

- For Warnings, Emergency Information and Updates:
- Visit the Emergency WA Website - [emergency.wa.gov.au](http://emergency.wa.gov.au)
  - Follow DFES on Facebook
  - Call DFES on 133 337
  - Weather and cyclone forecasts [www.bom.gov.au](http://www.bom.gov.au)

Other ways to stay up to date:

- BoM Cyclone Warning Advice Line 1300 659 210
- Road conditions (Mains Roads) - Visit the Main Roads Travel Map at <https://travelmap.mainroads.wa.gov.au/Home/Map> or call 138 138
- Road conditions (Shire roads) - [sdwk.wa.gov.au](http://sdwk.wa.gov.au)

**For emergency assistance -  
Police, Fire, Ambulance call 000  
For State Emergency Services  
(SES) call 132 500**

If you or anyone in your family is feeling stressed or anxious and would like to have a yarn with someone, there are social and emotional wellbeing services available.

- Mental Health Help - Fitzroy Crossing - **9166 1700** Mental Health Help - Derby - **9193 3605**
- After Hours - Mental Health Help - **1800 552 002**
- Aboriginal and Torres Strait Islander Crisis Support (24/7) - **13YARN (13 92 76)**

**FITZROY CROSSING PRESENTS**

**JUNIOR FOOTBALL**

**FRIDAY NIGHTS DINNER & DROP @ 5PM - 7PM OFFS PROVIDED FITZROY CROSSING TOWN OVAL**

Logos: WA Police, Shire of Derby / West Kimberley, CKFL, Marra Worra Worra Regional Corporation

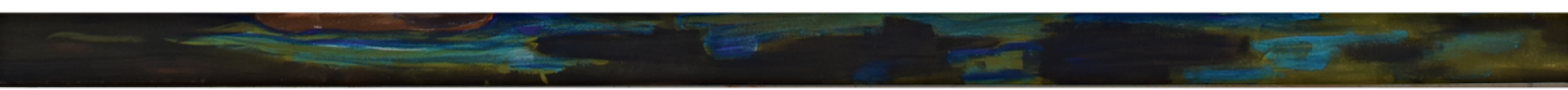
## Don't forget Junior Footy is on Friday nights at the oval!

Attention all young athletes of Fitzroy Crossing! The Junior Footy season is about to kick off. Gear up for action-packed Friday nights starting from the 16th of February, from 5 PM till 7 PM.

- Every Friday Night
- 5 PM till 7 PM
- FX Town Oval
- Dinner and Drop-off Provided
- Open to all youth of FX

Bring your energy, bring your passion, and let's make Friday nights deadly with local footy.

We would like to thank WA Police, Central Kimberley Football League and Marra Worra Worra for helping make this happen.



# A bright future for the Fitzroy Valley

**As executive officer of the Fitzroy Valley Flood Recovery Working Group, Douglas D'Antoine has seen first-hand the importance of local voices in guiding flood recovery efforts.**



WHEN DOUGLAS D'ANTOINE BOARDED one of the first Australian Defence Force chinook flights from Broome back to Fitzroy Crossing in early January last year he expected the worst. "To see just how much water there was on the ground and the amount of devastation from the air, it was an unsettling experience," Douglas recalls.

'The former CEO of the Bunuba Dawangarri Aboriginal Corporation says the weeks following the one-in-100-year flood event were extremely emotional for the impacted communities of the Fitzroy Valley. There was a lot of panic associated with people not knowing how high the water would rise," he says. "And then, once the water started to recede, there were issues with food security and fuel security and people coming to terms with the true impacts and the amount of devastation caused by the floods."

A Bardi and Jawi man who was born in Derby, Douglas says it was clear from an early stage that any community led recovery efforts would need to include all five language groups of the Fitzroy Valley. It was this understanding that led to the establishment of the Fitzroy Valley Flood Recovery Working Group, with representatives from the Bunuba, Gooniyandi, Nyikina, Wangkatjungka, and Walmajarri people.

Douglas, who was appointed executive officer after the working group's formation, says its grassroots nature has helped build trust within the community and drive change quicker in the flood recovery process. "Often with these types of working groups you've got people that are appointed, maybe by government, or by a third party", Douglas says.

*"But with the Fitzroy Valley Flood Recovery Working Group it was the different language groups themselves who nominated who they wanted to have on the working group," he says.*

*"That means you've got confidence that you've got the right people in the room to be able to provide guidance to the flood recovery, and that makes the process a lot quicker."*

The working group, that was expanded to include representatives from the broader community and local business sector, has played a crucial role in providing advice to Commonwealth and State government agencies, says Douglas. "We started in the response stage and we're now working through the recovery stage and the economic opportunities that the flood has created." He says along with keeping the community informed, the working group has played an important role in making the most of those economic opportunities, helping locals gain employment and develop businesses to help with the rebuild.

Douglas says the working group is showing what can be achieved when local voices are listened to. "It's clear that the establishment of the working group is ground-breaking, and the successes in its first twelve months have been material," he says. "And when you think that there's another two years of recovery work to go, it's a case of thinking that if those successes continue, Fitzroy Crossing, and the Fitzroy Valley, will be a much better place to live."

# Flood Hub Wordsearch

Find all the words relating to recovery in this wordsearch!



RESPONSE  
WEATHER  
COMMUNITIES  
DFES  
SDWK  
SHIRE  
ROAD  
EMERGENCY  
KIMBERLEY  
FITZROY VALLEY  
BRIDGE  
FLOOD  
RIVER

